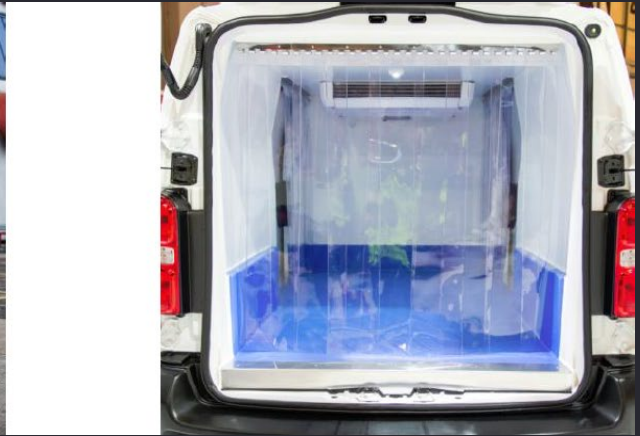




Fridge Specification

Available on Proace L1 & L2 Diesel

Specification	Fridge Conversion
Load area dimensions	2.46m (L) x 1.33m (W) x 1.167m (H) approx.
Est conversion weight	156kg
Est payload	848kg
Intended use	Maximum of 3 openings per hour of 3 minutes each
Suitable for	Packaged goods
Equipment	CoolKit insulated van lining High-intensity LED load space lighting Low slip-resistance surface, in grey GAH Lance LC150e refrigeration unit. Chill to +0° Celsius



Freezer Specification

Available on Proace L1 & L2 Diesel

Specification	Fridge Conversion
Load area dimensions	2.435m (L) x 1.28m (W) x 1.137m (H) approx..
Est conversion weight	201kg
Est payload	803kg
Intended use	Maximum of 3 openings per hour of 3 minutes each
Suitable for	Packaged goods
Equipment	CoolKit insulated van lining High-intensity LED load space lighting Low slip-resistance surface, in grey GAH Lance LF150e refrigeration unit. Freeze to -18° Celsius